

CASELABS



Merlin Quick Start Guide

Standard accessories

- 4 Sets of standard Flex-Bay device mounts (MAC-125)



- Tech Station feet



- HDD/SSD hardware mounting kit



- Spare Parts kit



- Cable ties



- Motherboard tray handle



- Case Logo



- 4 Rubber case feet



- Cable management hole plugs (NA for SM5)



- Motherboard stand-off kit



- PSU mounting tape (NA for SM5)



1. Install the Case Feet in the bottom of the case using the caster holes. The outer most holes are recommended.



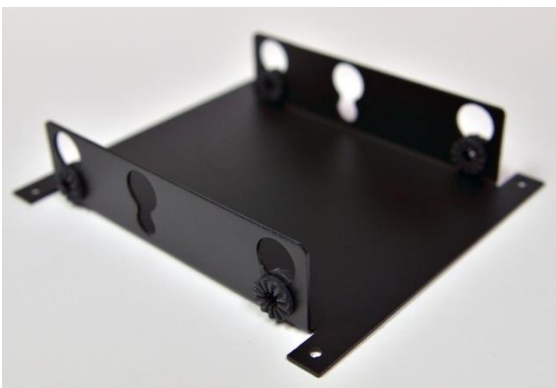
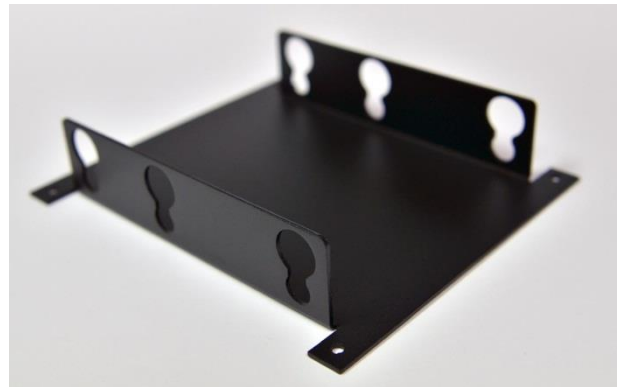
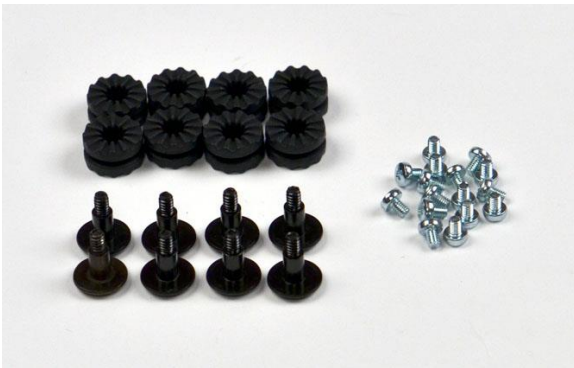
2. Install the Motherboard Tray Handle in the two center holes of the PCI backplate.

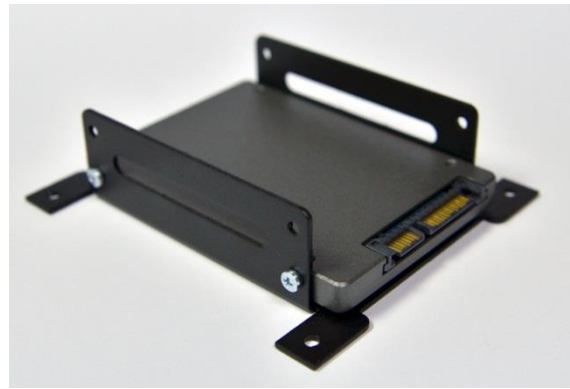


3. Place the PSU mounting tape and install the PSU support mount into the desired PSU bay.
(Please note the SM5 is not included with a PSU support mount.)

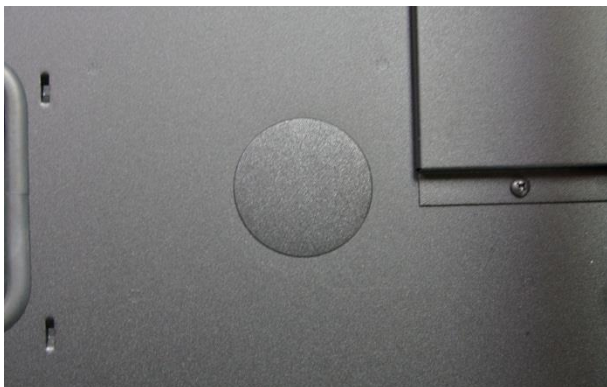
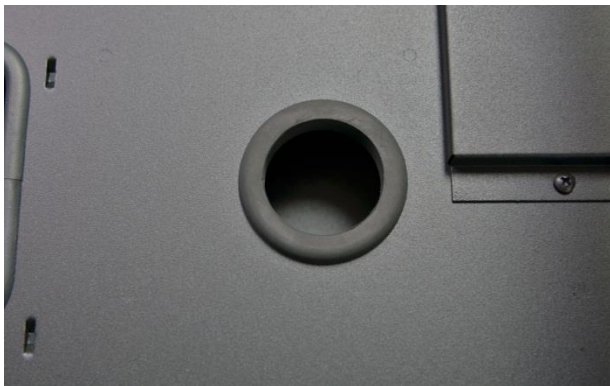


4. Install drives





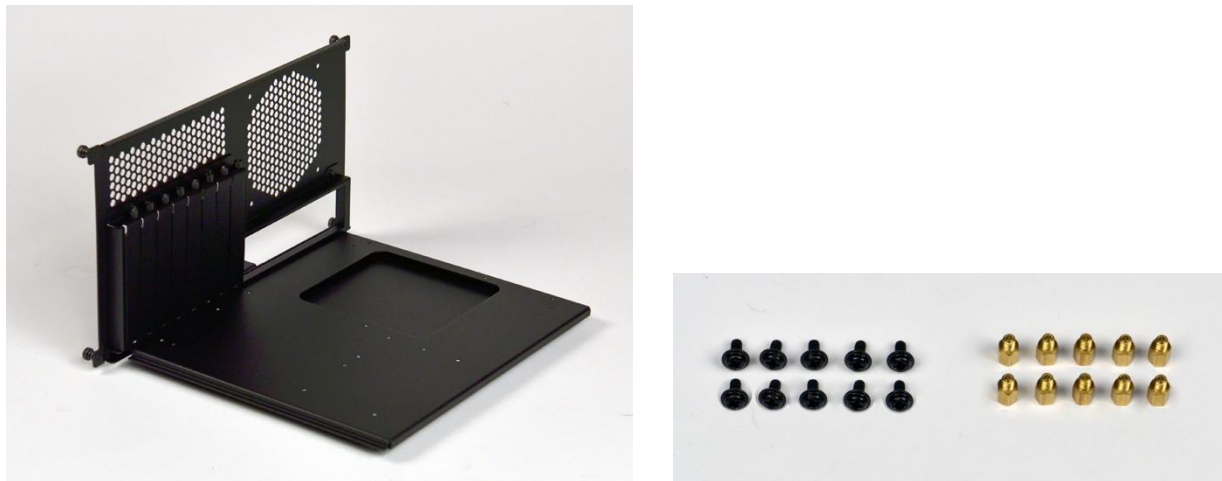
5. Cable Management Hole Plugs can be used in the divider holes if not in use. (Please note the SM5 does not have these cable management holes or plugs.)



6. To use Tech Station install rubber feet in each corner of the motherboard tray.



7. Place stand-offs in threaded holes in the motherboard tray, and use screws to secure the motherboard in place.



8. Mount Flex-Bay brackets to devices and place in Flex-Bay.



9. Because the Case is reversible the sticker is not installed in the factory. Place the sticker in the desired spot



END.