

# CASELABS



## Mercury Assembly Manual

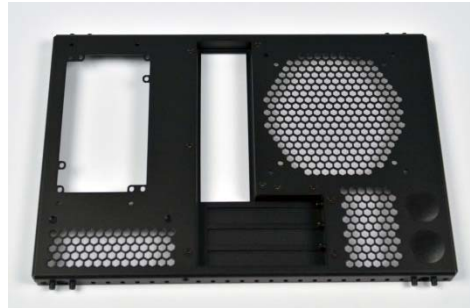
**This manual shows pictures of the Mercury S3. The Mercury S5 and S8 are constructed in the same exact manner as the S3.**

**Step 1.**

- Locate the bottom and rear chassis sections.



Bottom



Rear

- Using the small bag of countersink screws, join the two parts as shown.



**Step 2.**

- Turn the assembly onto its back side and locate the Mid-Chassis-Section.



Mid-Chassis Section

- Assemble as shown.



### **Step 3.**

- Locate the top chassis section. There are two variants (drop-in and non-drop-in), but either one can be identified by the standard-offs in each corner. The retention clip will already be attached.

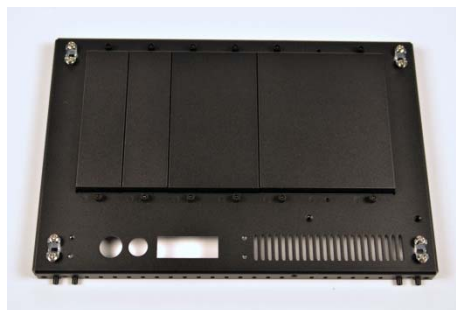


- Join the top chassis section to the assembly as shown. Note the radiator opening should be in line with the 120mm hex-mesh fan hole.



### **Step 4.**

- Locate the front chassis section and remove the front cover by lifting up on each corner.



- Join the front chassis section to the assembly as shown.



### **Step 5.**

- Locate the case feet. Install the case feet on the bottom of the case in each corner.

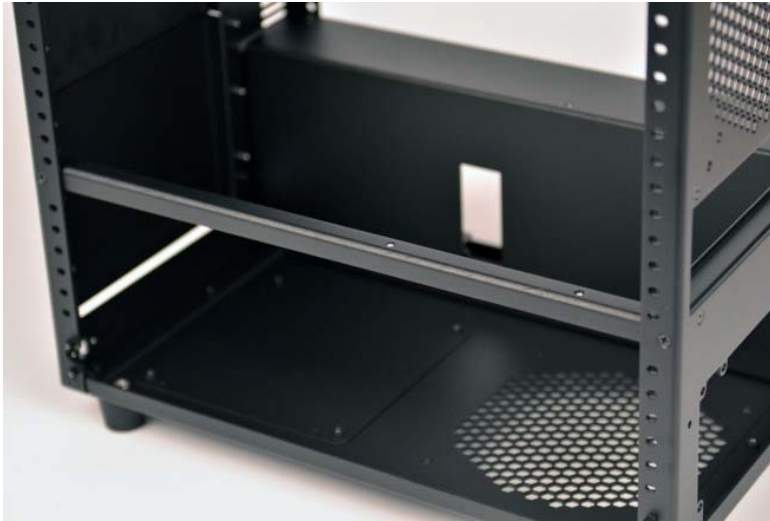


### **Step 6.**

- Locate the motherboard support brace.



- Install as shown. Note the threaded holes are towards the rear of the case.



- Locate the motherboard tray and notice the oblong holes on one side.



- Mount the motherboard tray as shown. The oblong holes should be over the support brace.



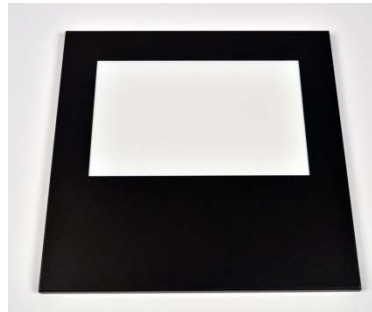
**Step 8.**

- Install switch bracket as shown.



**Step 9.**

- Locate the top cover and doors.



- If the door has a window, you will need to remove the protective film. It may be best to remove the film once your build is complete as to avoid scratching the window.



- The front cover, doors and top cover snap into the metal clips.



**END.**